

Inquiring minds want to Know!

Applications for the School of Social Work private scholarships for the new year will be available in early January, 2006 in Room 105 of the Thompson Home or on website: www.socialwork.wayne.edu, the deadlines are:

Mar. 4th (Summer Term)
Apr. 3rd (Fall/Winter Term)

Applications must include a completed **FAFSA**, except for Canadians students who must submit an **OSAP**, all foreign students must submit confirmation of financial support. **All** students must submit **supporting tax documentation and proof of income earned**. Incomplete, missing, or inaccurate information shall result in disqualification of an application for **SSW** financial aid and/or scholarships. Additional paperwork may be required based on the selection criteria.

Another source of information is our display "window" located by Ms. Alter-Kay's office. There you will find updated information from the Office of Scholarships and Financial Aid, the Graduate School (announcing the **Graduate Professional Scholarship**), and other departmental awards.

Additional assistance may be offered by the School of Social Work through the **Emergency Loan**, and **Retention Scholarship** funds to offset financial hardships which may occur during the school year. Students must fill out separate applications available in Room 105, and supply the required paperwork. The maximum amount for the **emergency loan** is \$500 with a stipulation that it is to be paid by the end of the month it is issued. If you are to

receive a loan or grant through the Office of Scholarships and Financial Aid, the \$500 would be taken from the loan/grant amount and the student will get the difference. The **Retention Scholarship** amount is determined by student need, and amount of monies available in our scholarship accounts. For further inquiries please contact Beverly Hunter in Room 105, or call (313) 577-4409.

OSFA!

When interacting with the WSU Office of Scholarships and Financial Aid the trick is to be resourceful in getting information. Upon receiving the information adhere to all deadlines, and supply all documents needed. Do not file at the last minute and become alarmed when the aid you were expect-

ing is not awarded, so have a "back-up" plan to cover any delays. To assist you in your request for financial aid information at WSU use the following website:

[Http://www.financialaid.wayne.edu](http://www.financialaid.wayne.edu)

On the website the types of financial aid at WSU (ie. grants/scholarships, loans, and work-study) are explained. Also, you have easy access to the **FAFSA (Free Application for Federal Student Aid)** website, downloading various OSFA forms, and searching on alternative financial aid websites.

Students are encouraged to file for the **FAFSA** on the internet (<http://www.fafsa.ed.gov>) which decreases processing time for the application (2-3 weeks vs. 4-6 weeks). The earliest students can file is January 1, 2006.

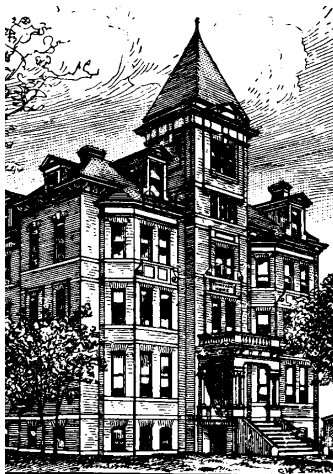
JONITA WHITTLE

Jonita Whittle is our new **School of Social Work Liaison** in the WSU Office of Scholarships and Financial Aid (OSFA). She can be reached by phone or e-mail. Her contact information is: (313) 577-4971 and AS0796@wayne.edu. Ms. Whittle will work closely with students to resolve financial aid problems.

IMPORTANT WEBSITES!!

FinAid The Smart Student Guide to Financial Aid on the Web <http://www.finaid.org> links to numerous sources of information about student financial aid, including free on-line scholarship search databases (**FastWEB**, **SRNexpress**, **ExPAN**, and **MACH25**). Extensive information is provided about known scholarship scams, how to recognize scams and how to report them.

DID
YOU
KNOW?



Thompson Home

You Can Deal With It <http://www.youcandealwithit.com> Financial planning basics, establishing good credit, loan repayment options, and avoiding financial trouble are some of the topics on this “**journey through the real world**” site.

Students.gov <http://www.students.gov> This site is designed as a one-stop shop for answers to questions about financial aid, education, career, and government.

Alternative Loans Overview and Comparison Page <http://www.finaid.org/loans/privatestudentloans.phtml>. This site provides a comparison of the various alternative loan programs including, origination and other fees, interest rates and a **loan analyzer calculator**, and co-signer requirements.

Borrower’s Guide to Defaulted Student Loans <http://www.ed.gov/offices/OSFAP/DCS/> Information concerning what you should do if your student loan is in default.

Wayne State University Office of Military & Veterans Affairs <http://sdcl.wayne.edu/omva/omvahome.html> Provides an explanation of the educational benefit programs available to veterans and their dependents.



WSU Title IV (Federal) School Code

....What you need to do to apply for financial aid:

- Apply for admission to the colleges you are considering.
- File the Free Application for Federal Student Aid (FAFSA) available in late Fall - file after January 1.
- File any additional financial aid application form (s) the college(s) requires.
- File appropriate state program applications.

Don't forget to:

- Investigate local sources of assistance.
 - Investigate sources of assistance related to your college major or choices.
 - Investigate employer-based college assistance programs.
- Meet all application deadlines.
 - Remember to apply for financial aid every year.

2006-2007 WAYNE STATE ONLINE APPLICATION

The **On-line application** for the **2006-2007 Wayne State University Private Scholarships** is now available! These scholarships are offered by **private donors** to students already enrolled at Wayne State University or admitted students planning to enroll for fall, 2006. Scholarships may be awarded based on a combination of the specific award criteria, information provided on the **Free Application for Federal Student Aid (FAFSA)**, grade point average, and a completed admission application (to the Department of your choice). Submission of the **2006-2007 Private Scholarships Application** is required. The application can be found online at **www.**

scholarships.wayne.ed beginning November 2005. The deadline for submission of Private Scholarships Application is **March 1, 2006**. Continue to check this site throughout the year. **New scholarships may be added.**

ENROLLMENT STATUS

At the **undergraduate level**, enrollment for a minimum of 12 credit hours is considered full-time; six to 11 credit hours is considered half-time. At the **graduate level**, enrollment for eight credits minimum is full-time; four to seven credits is half-time.