



# Are you interested in working with Detroit's youth & families?

*Five \$10,000 scholarships will be awarded for placements at Black Family Development, Inc.*

With support from William F. Pickard, PhD, the Wayne State University School of Social Work is proud to offer 5 new \$10,000 scholarships launching fall 2021.

## Selection criteria:

- Admission to the BSW or MSW program and in good academic standing
- Reliable transportation and willingness to travel as required

## Students must commit to:

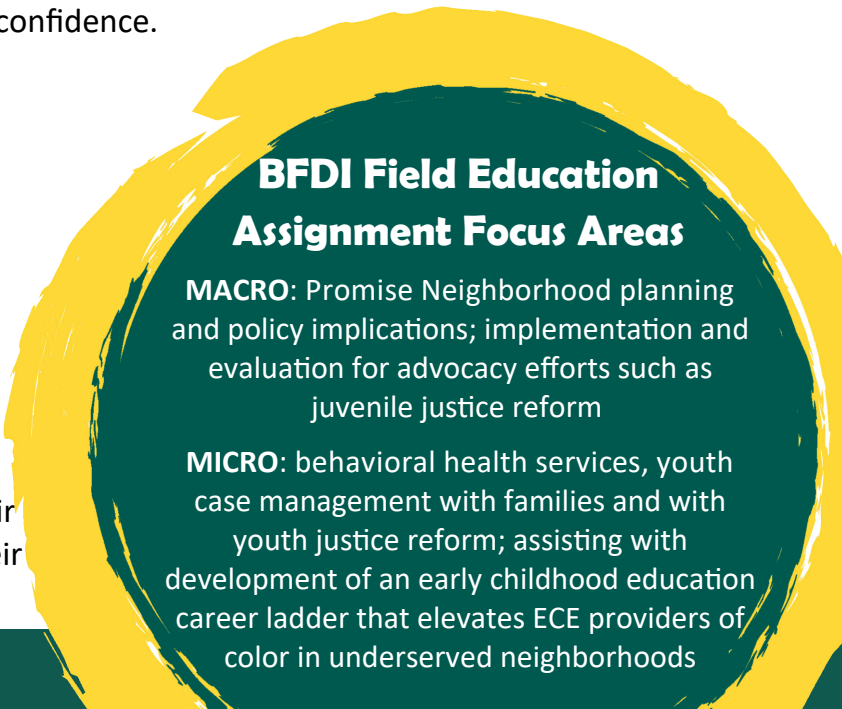
- Being an active member of the Association of Black Social Workers Detroit or WSU chapter
- Completion of their field placement with Black Family Development, Inc.

## Ideal candidates for this program:

- Will have a passion for engaging with local organizations, leaders and community members with valuable and diverse lived experience.
- Are enthusiastic about working with youth and families to eliminate social inequities, advance social justice and build a strong sense of self-confidence.
- We are seeking indigenous students and aware of the rich Detroit history and culture.

## Applicants:

- Awarded on a first-come first-serve basis.
- Applicants will be interviewed by the WSU Office of Field Education and Black Family Development, with BFDI making the final selection.
- Students should identify their interest on their OFE Student Detail Form and discuss with their placement assistant.



### **BFDI Field Education Assignment Focus Areas**

**MACRO:** Promise Neighborhood planning and policy implications; implementation and evaluation for advocacy efforts such as juvenile justice reform

**MICRO:** behavioral health services, youth case management with families and with youth justice reform; assisting with development of an early childhood education career ladder that elevates ECE providers of color in underserved neighborhoods