



Are you interested in working with Detroit's youth & families?

Five \$10,000 scholarships will be awarded for placements at Black Family Development, Inc.

With support from William F. Pickard, PhD, the Wayne State University School of Social Work is proud to offer 5 new \$10,000 scholarships launching fall 2021.

Selection criteria:

- Admission to the BSW or MSW program and in good academic standing
- Reliable transportation and willingness to travel as required

Students must commit to:

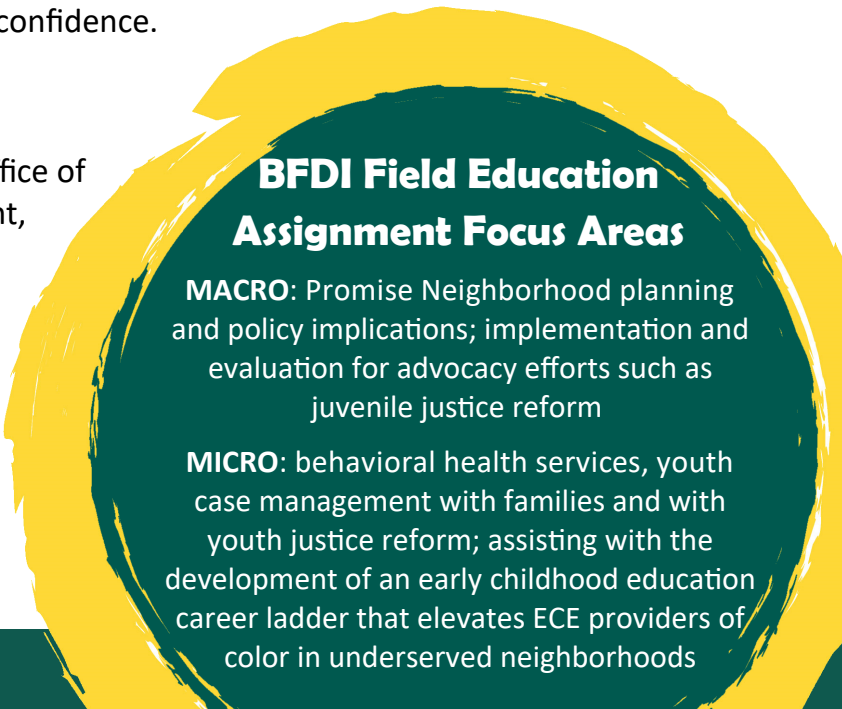
- Be an active member of the Association of Black Social Workers Detroit or WSU chapter
- Completion of their field placement with Black Family Development, Inc.

Ideal candidates for this program:

- Will have a passion for engaging with local Detroit organizations, leaders and community members with valuable and diverse lived experience.
- Are enthusiastic about working with youth and families to eliminate social inequities, advance social justice and build a strong sense of self-confidence.

Award details:

- Applicants will be interviewed by the WSU Office of Field Education and Black Family Development, with BFDI making the final selection.
- There is no application deadline, awards will be distributed as applicants are approved by BFDI.
- Students should identify their interest on their OFE Student Detail Form and discuss with their placement assistant.



BFDI Field Education Assignment Focus Areas

MACRO: Promise Neighborhood planning and policy implications; implementation and evaluation for advocacy efforts such as juvenile justice reform

MICRO: behavioral health services, youth case management with families and with youth justice reform; assisting with the development of an early childhood education career ladder that elevates ECE providers of color in underserved neighborhoods